

## A Selection of Maps of *The New Geography of Post-COVID Catalonia*

The following 20 maps have been selected from a total of 60 published in the book *La nova Geografia de la Catalunya postcovid* [*The New Geography of Post-COVID Catalonia*] (2021), some of which are cited in the previous chapters, their respective legends having been translated into English.

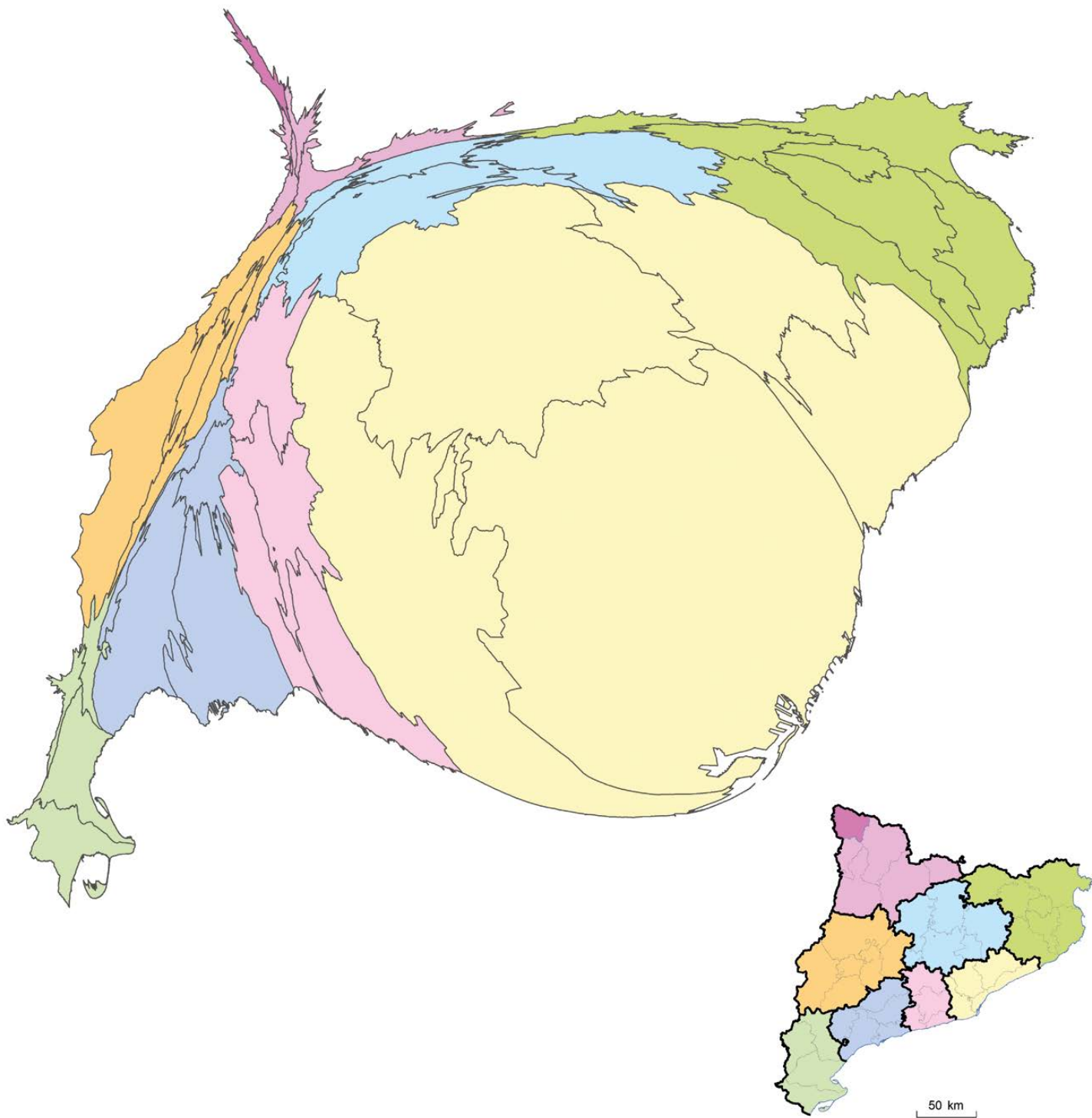
Their selection has been based on two goals: their current relevance and their transcendence in providing an accurate vision of Catalonia's territory today from a sufficiently broad spectrum while illustrating some of the specific themes discussed in the earlier chapters.

The maps were produced by the Cartography and SIG Service of the University of Lleida, under the direction of Dr. Jesús Burgueño.

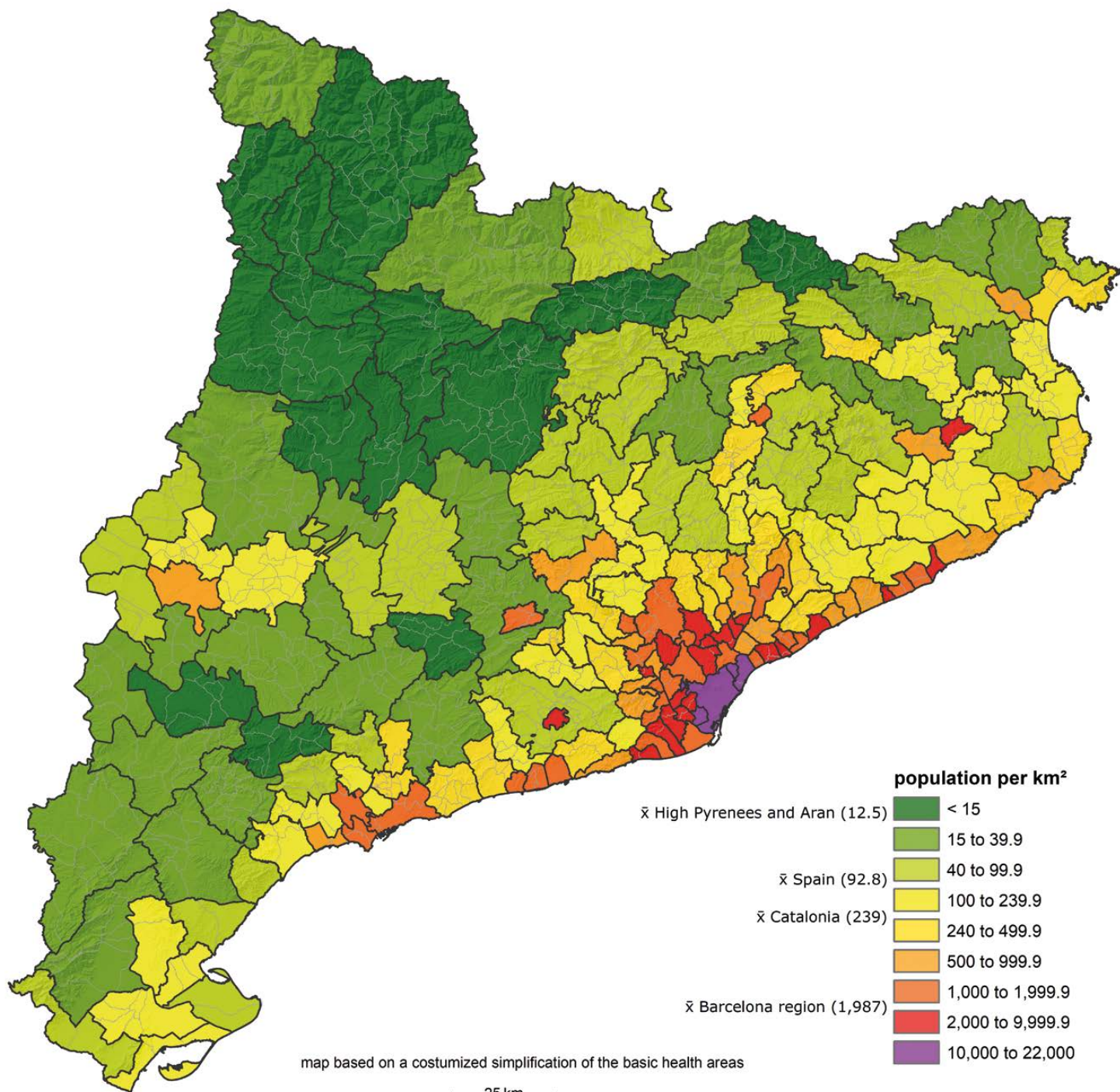
### List of maps

1. Population cartogram
2. Population density
3. Foreign born population
4. Differences in unemployment between women and men
5. Railway network and metropolitan transport authority
6. Main crop groups
7. Synthetic indicators of demographic and economic dynamics
8. Industry workers
9. Shopping malls
10. Exports
11. Extreme Heat
12. Hydrography
13. Ebre Delta topography
14. Protected sites
15. Landscape units
16. Land use
17. Energy production and transport
18. Income level of taxpayers: income tax
19. Independence movement
20. Travel time in relation to Barcelona

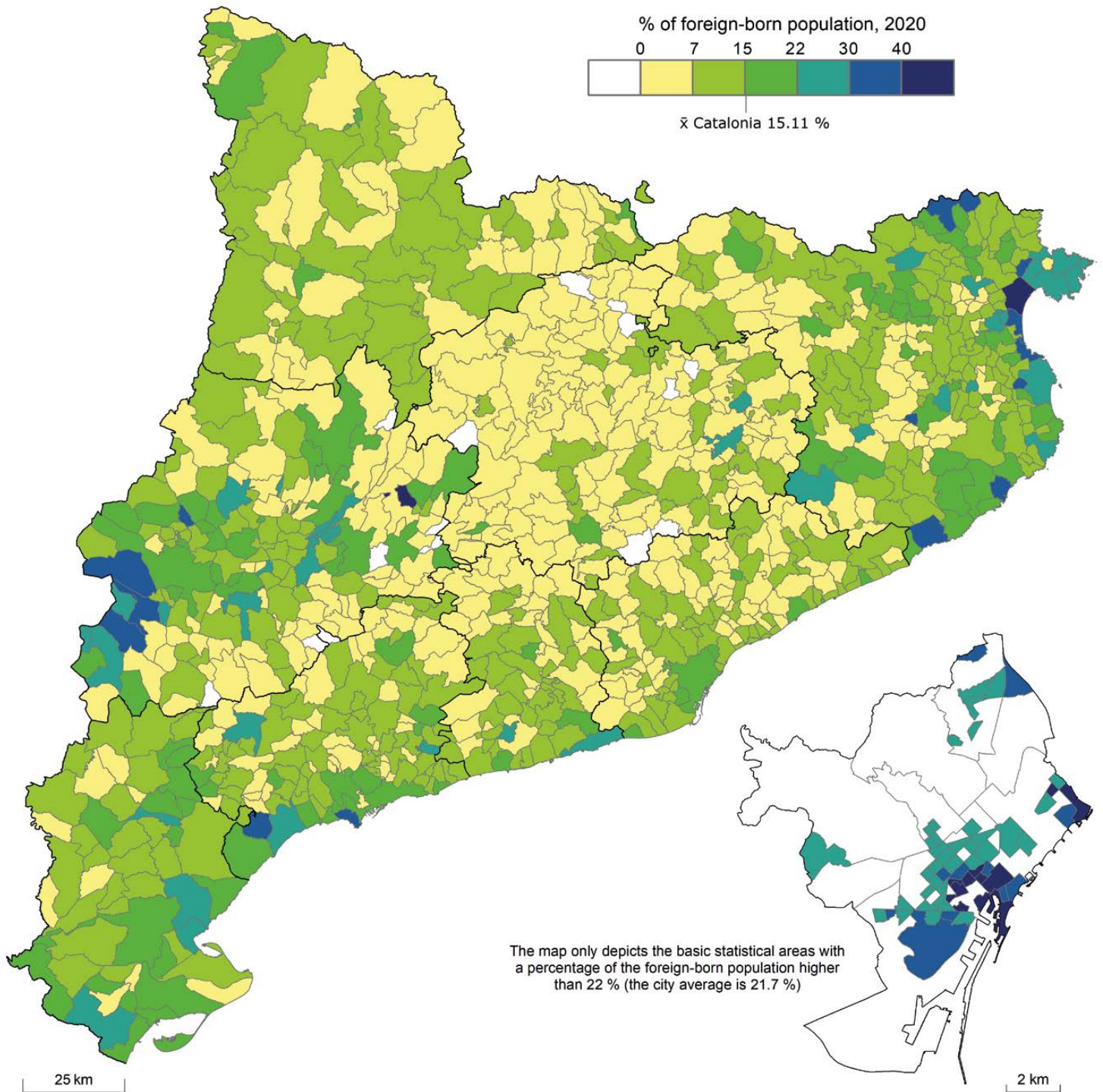
# 1 POPULATION CARTOGRAM



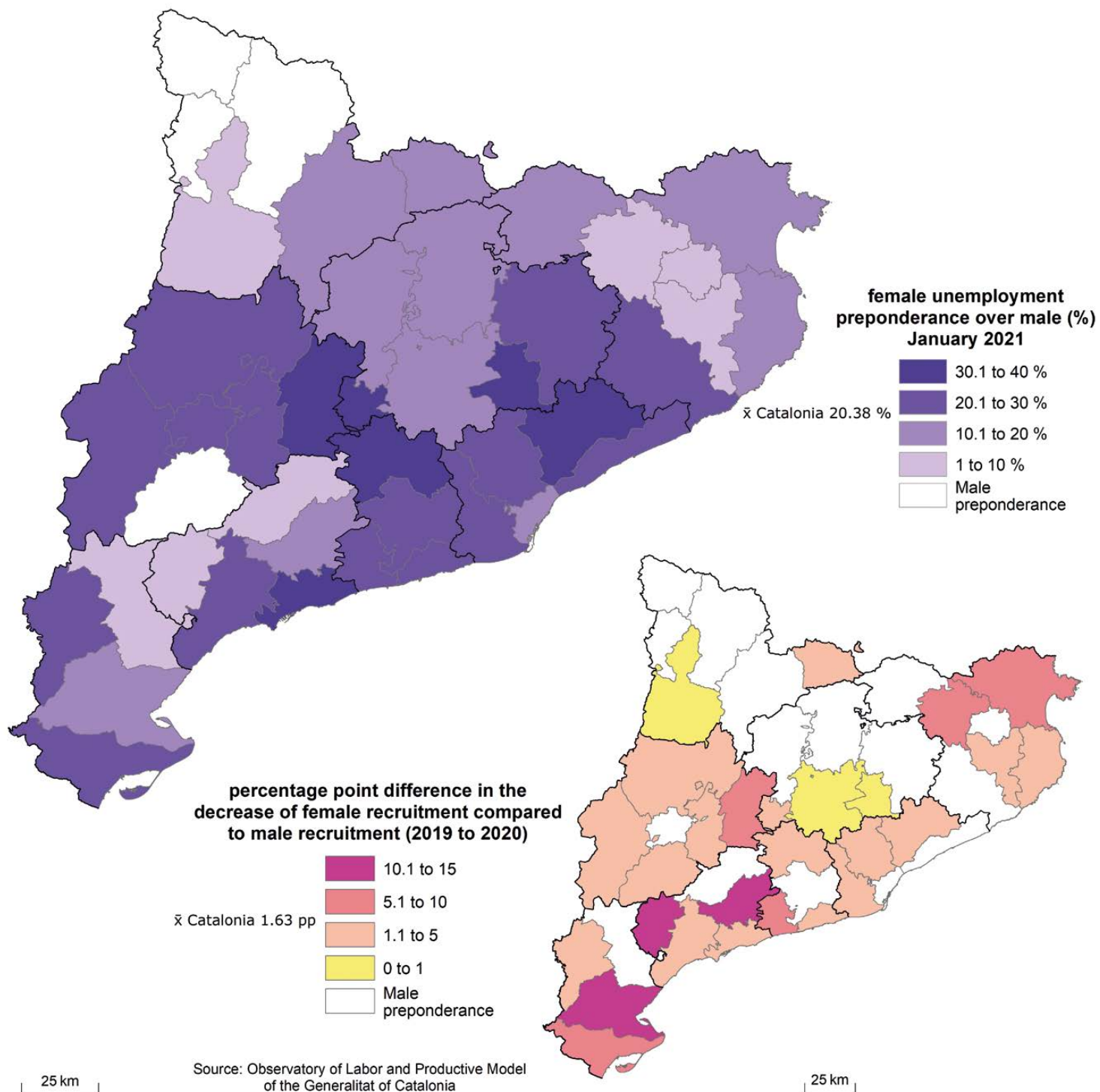
## 2 POPULATION DENSITY



### 3 FOREIGN-BORN POPULATION



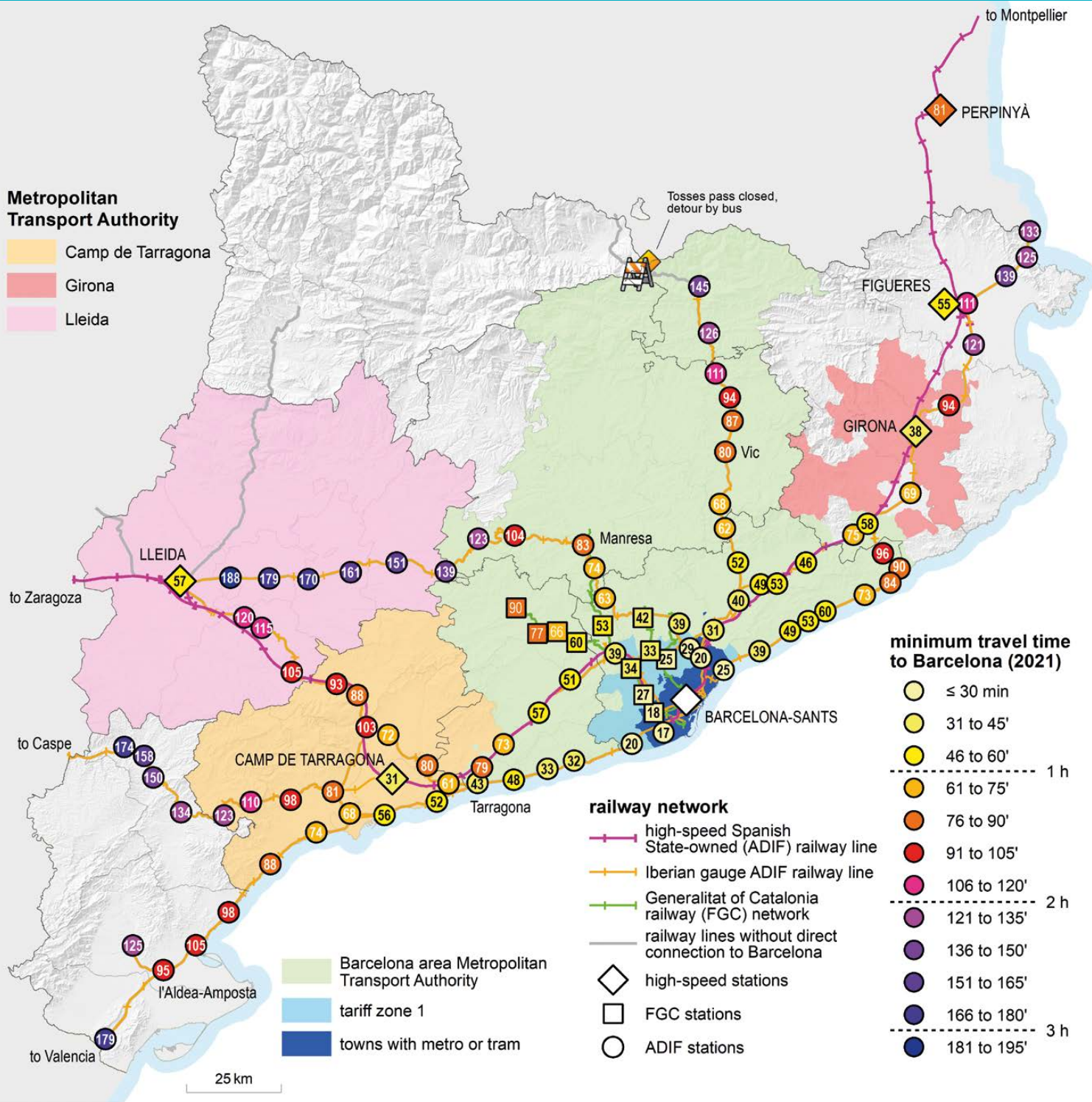
# 4 DIFFERENCES IN UNEMPLOYMENT BETWEEN WOMEN AND MEN



# 5 RAILWAY NETWORK AND METROPOLITAN TRANSPORT AUTHORITY

## Metropolitan Transport Authority

- Camp de Tarragona
- Girona
- Lleida



### minimum travel time to Barcelona (2021)

- ≤ 30 min
- 31 to 45'
- 46 to 60'
- 61 to 75'
- 76 to 90'
- 91 to 105'
- 106 to 120'
- 121 to 135'
- 136 to 150'
- 151 to 165'
- 166 to 180'
- 181 to 195'

### railway network

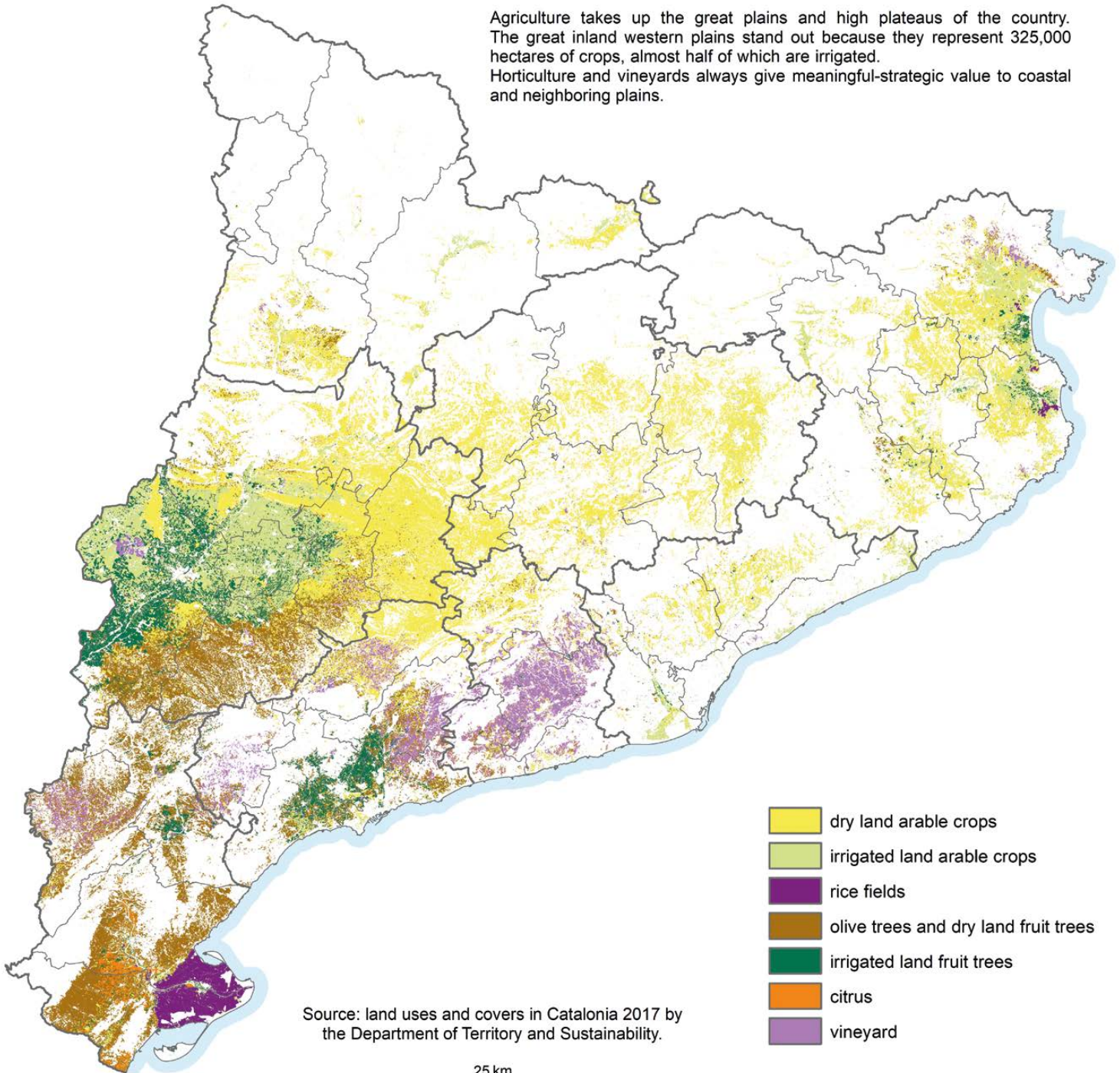
- high-speed Spanish State-owned (ADIF) railway line
- Iberian gauge ADIF railway line
- Generalitat of Catalonia railway (FGC) network
- railway lines without direct connection to Barcelona
- high-speed stations
- FGC stations
- ADIF stations

- Barcelona area Metropolitan Transport Authority
- tariff zone 1
- towns with metro or tram

25 km

## 6 MAIN CROP GROUPS

Agriculture takes up the great plains and high plateaus of the country. The great inland western plains stand out because they represent 325,000 hectares of crops, almost half of which are irrigated. Horticulture and vineyards always give meaningful-strategic value to coastal and neighboring plains.

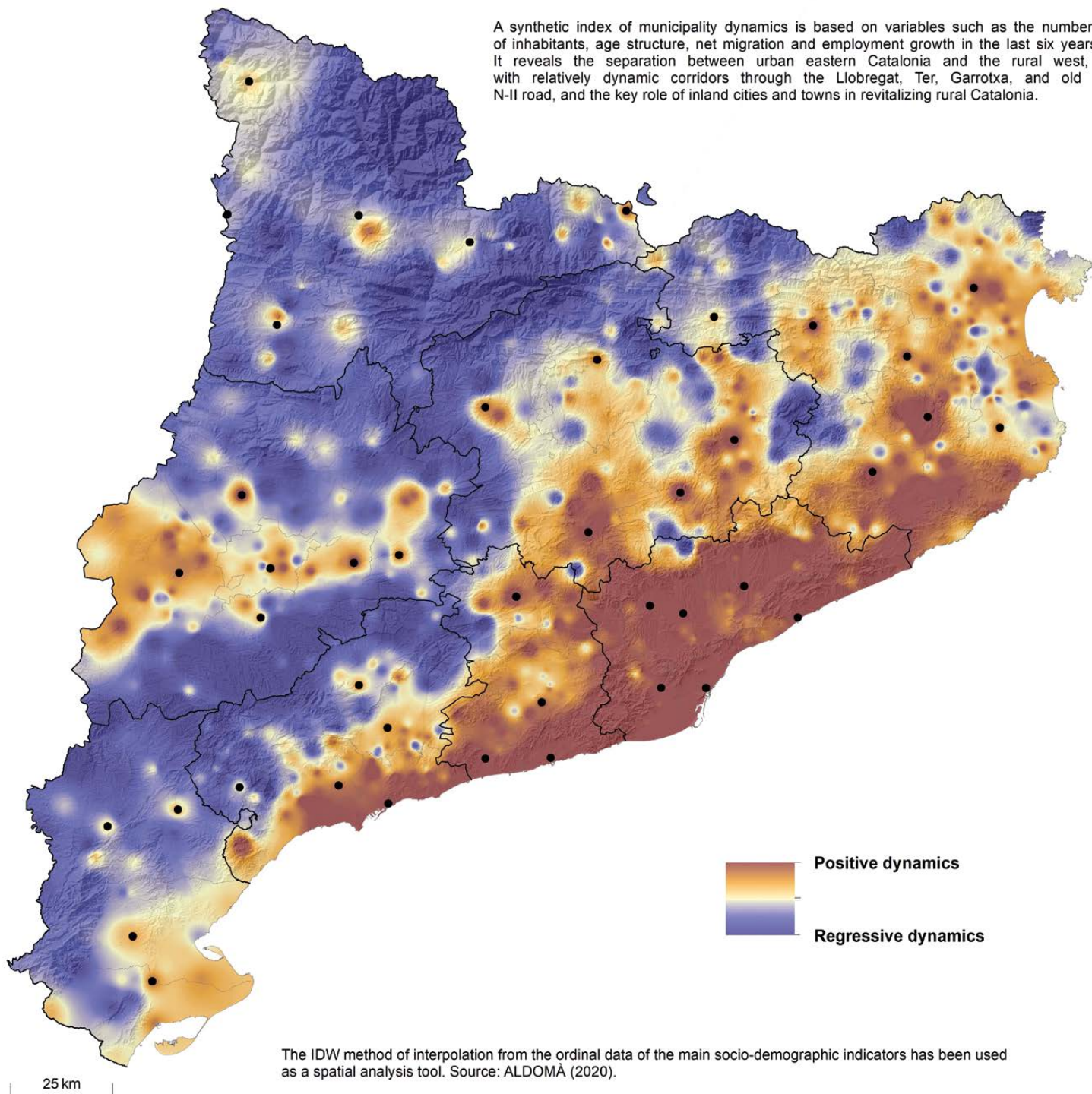


Source: land uses and covers in Catalonia 2017 by the Department of Territory and Sustainability.

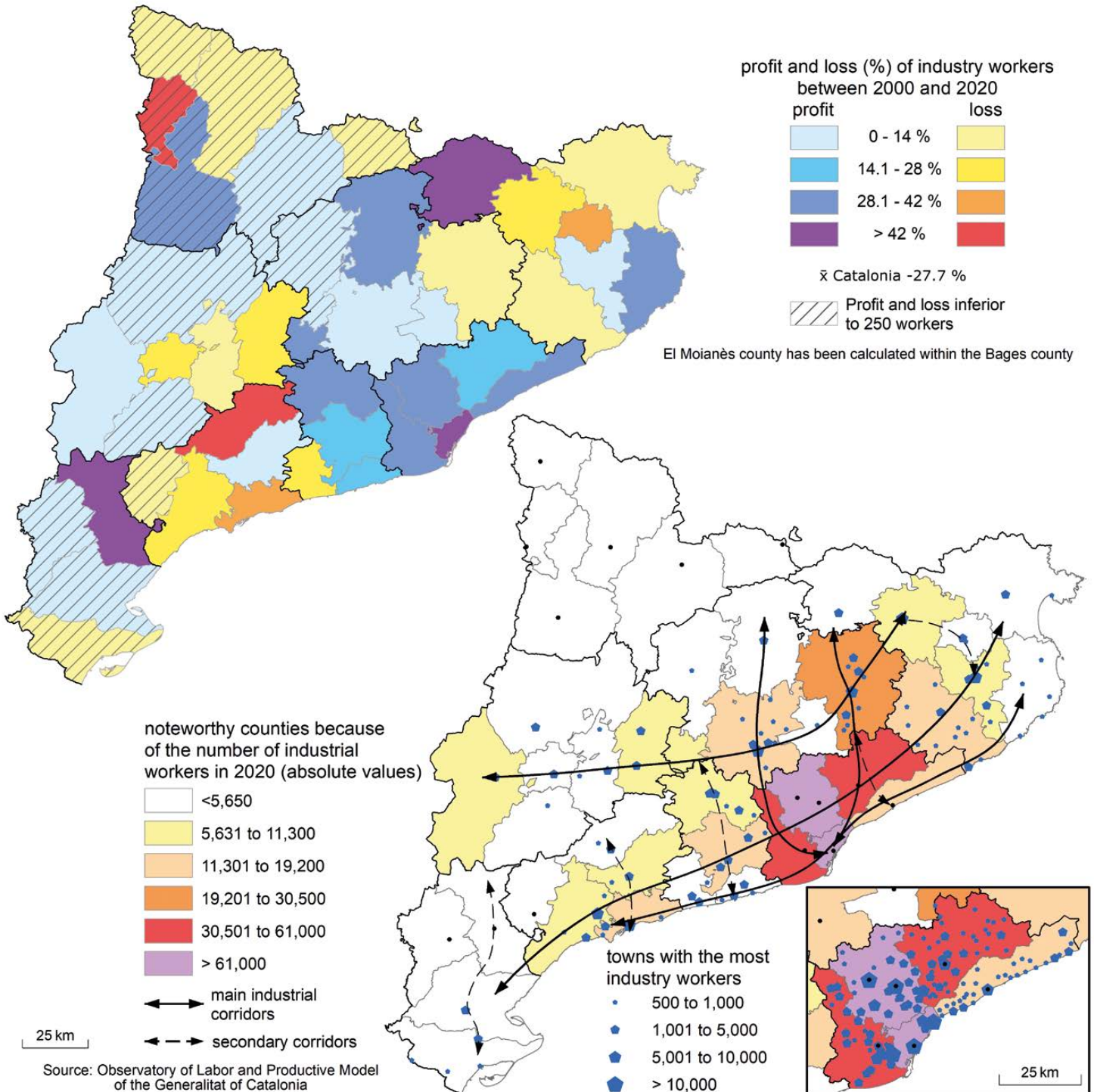
25 km

## 7 SYNTHETIC INDICATORS OF DEMOGRAPHIC AND ECONOMIC DYNAMICS

A synthetic index of municipality dynamics is based on variables such as the number of inhabitants, age structure, net migration and employment growth in the last six years. It reveals the separation between urban eastern Catalonia and the rural west, with relatively dynamic corridors through the Llobregat, Ter, Garrotxa, and old N-II road, and the key role of inland cities and towns in revitalizing rural Catalonia.

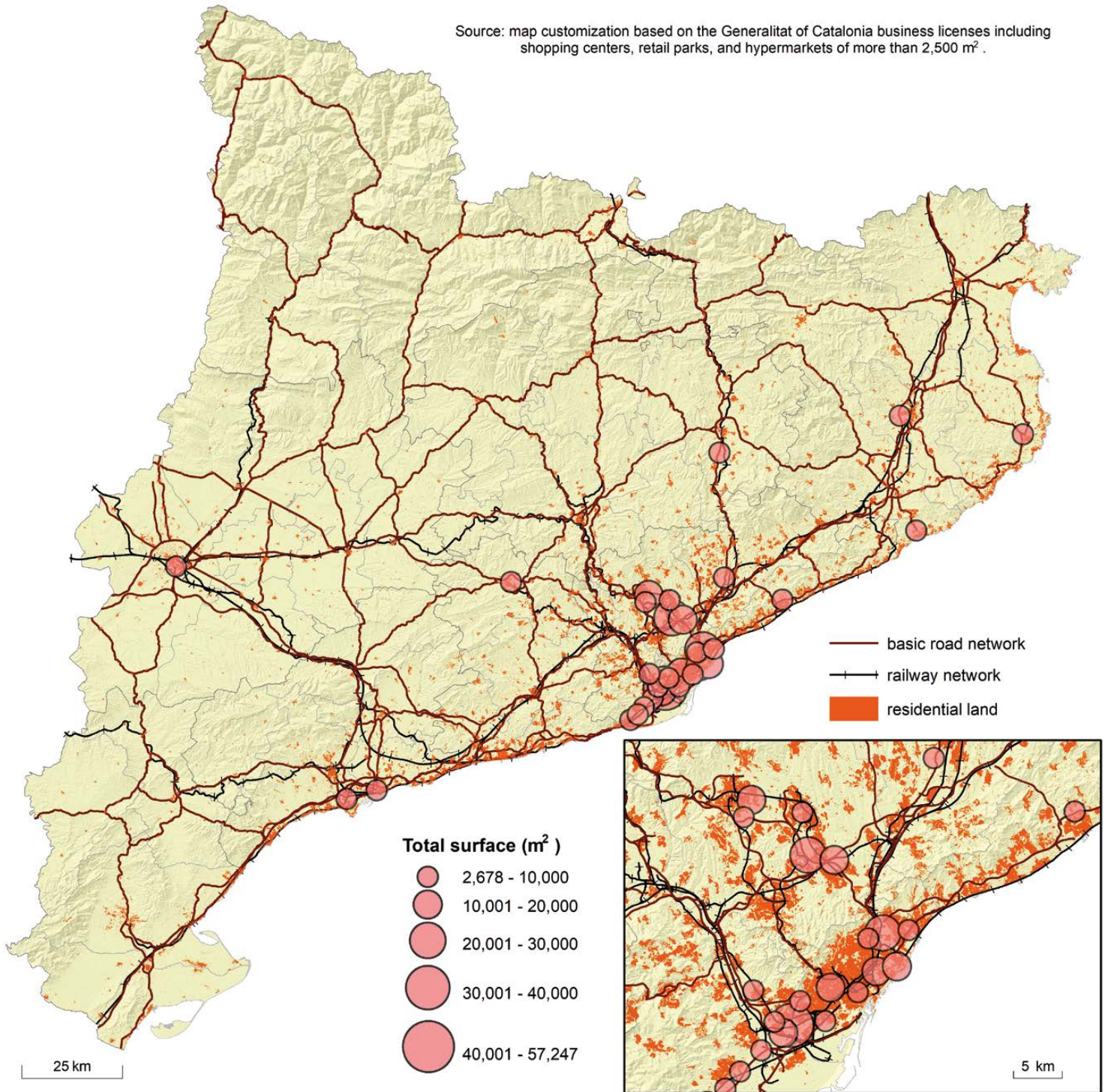


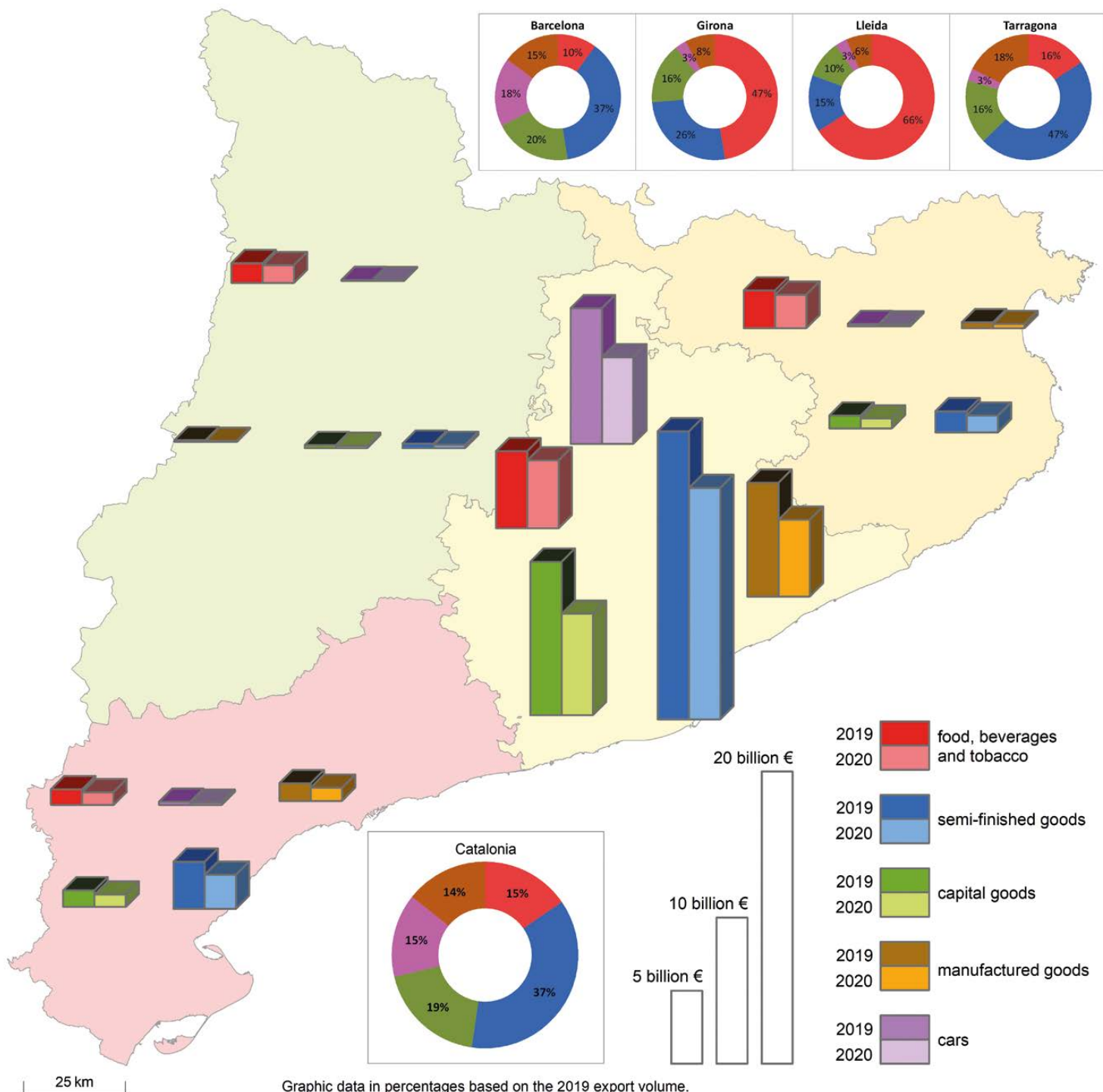




# 9 SHOPPING MALLS

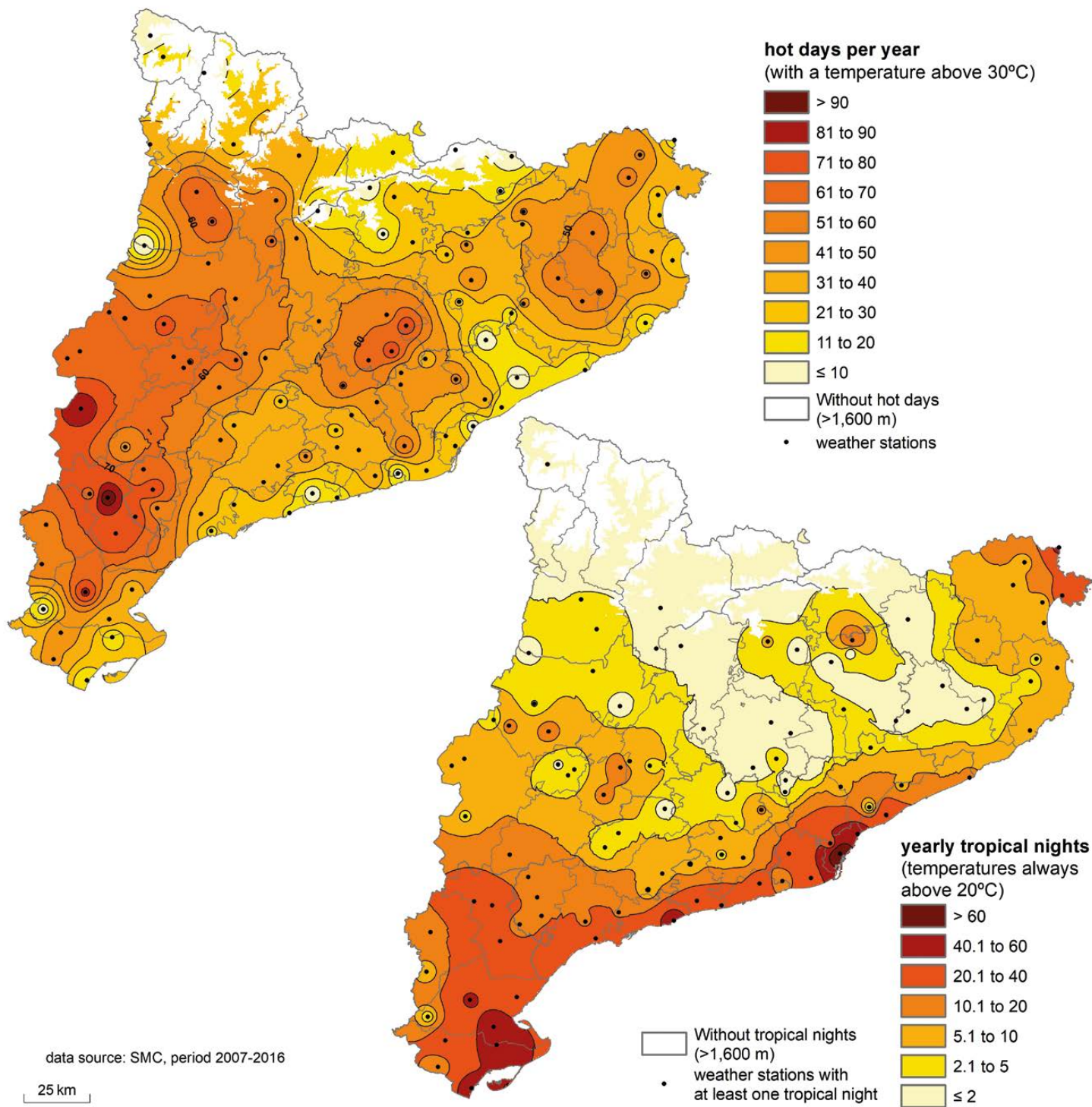
Source: map customization based on the Generalitat of Catalonia business licenses including shopping centers, retail parks, and hypermarkets of more than 2,500 m<sup>2</sup>.

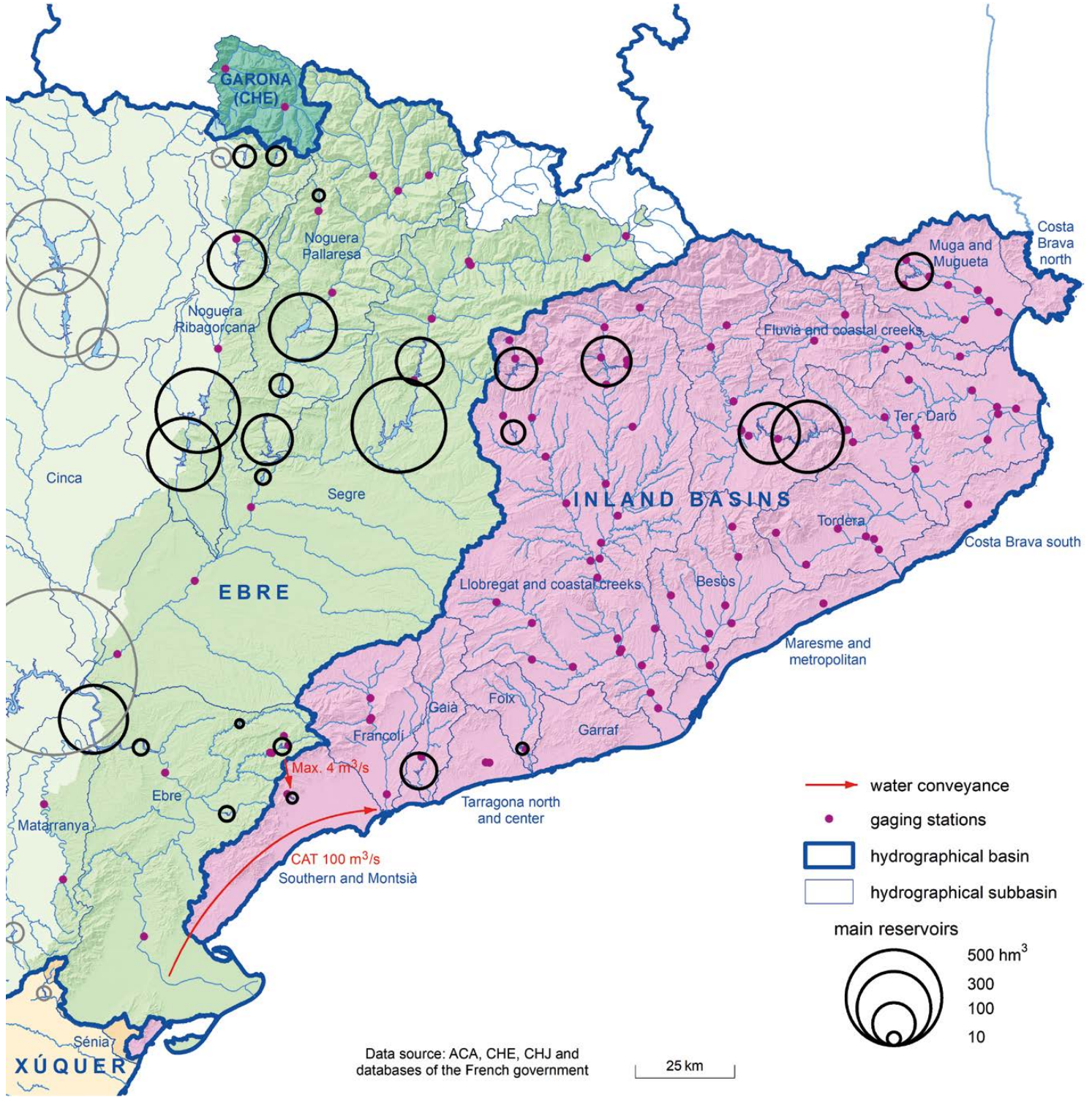




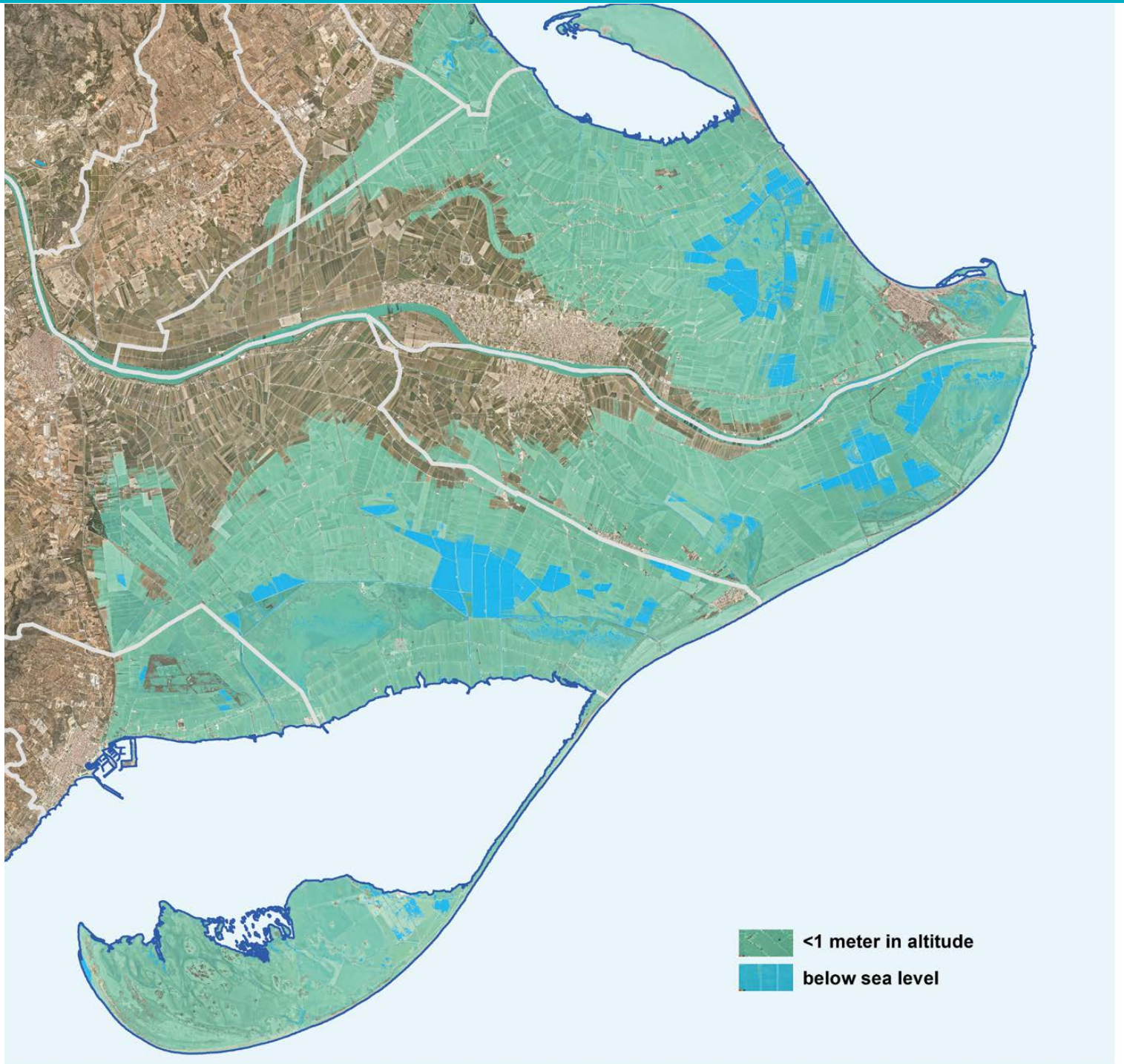
Graphic data in percentages based on the 2019 export volume.

# 11 EXTREME HEAT














# 13 EBRE DELTA TOPOGRAPHY



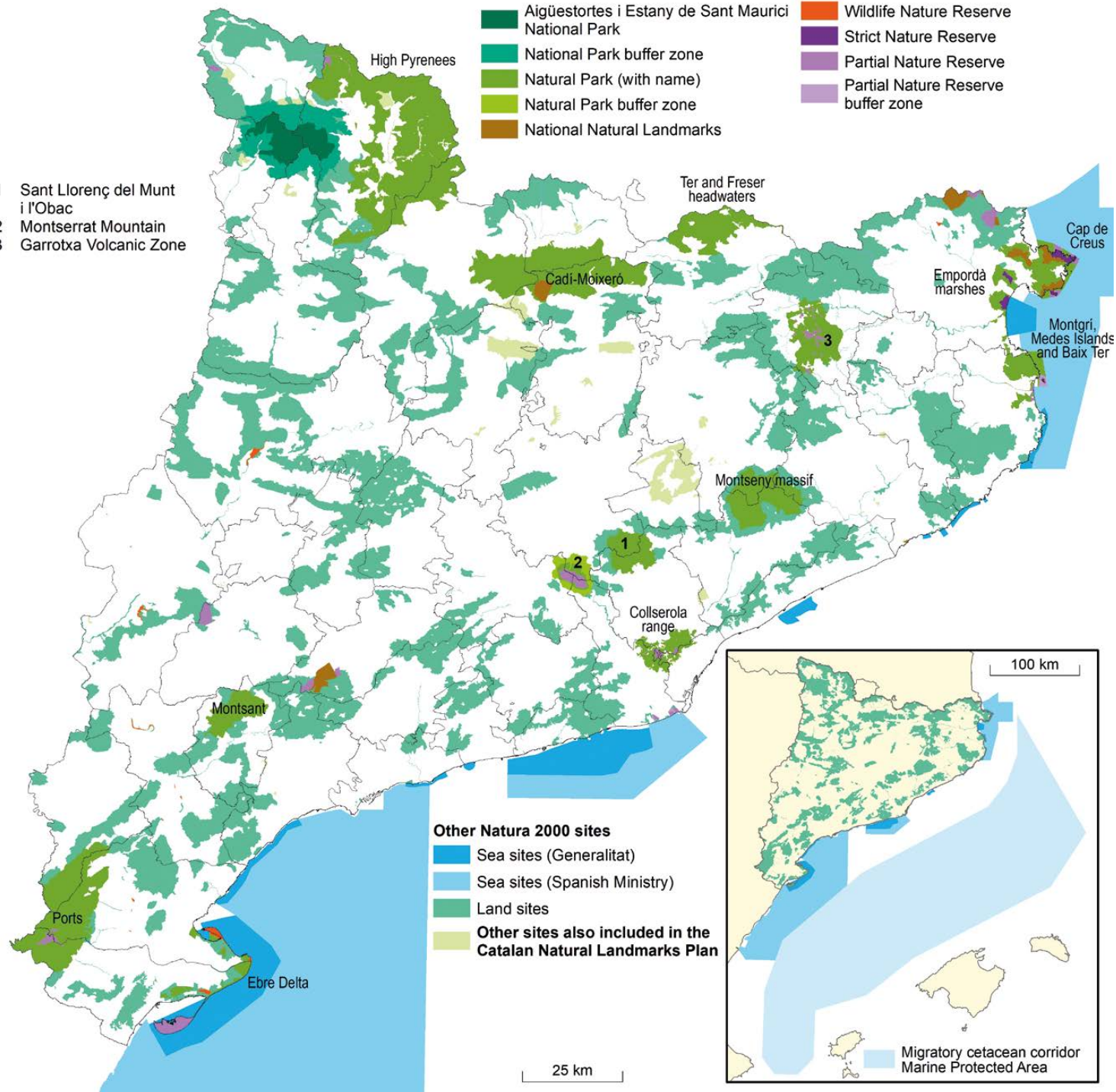
2 km

Source: Orthophoto 2016 and land elevation model 2x2m, ICGC.

## Specially Protected Nature Sites

- |   |   |   |                                    |
|---|---|---|------------------------------------|
|  | Aigüestortes i Estany de Sant Maurici National Park |  | Wildlife Nature Reserve            |
|  | National Park buffer zone                           |  | Strict Nature Reserve              |
|  | Natural Park (with name)                            |  | Partial Nature Reserve             |
|  | Natural Park buffer zone                            |  | Partial Nature Reserve buffer zone |
|  | National Natural Landmarks                          |   |                                    |

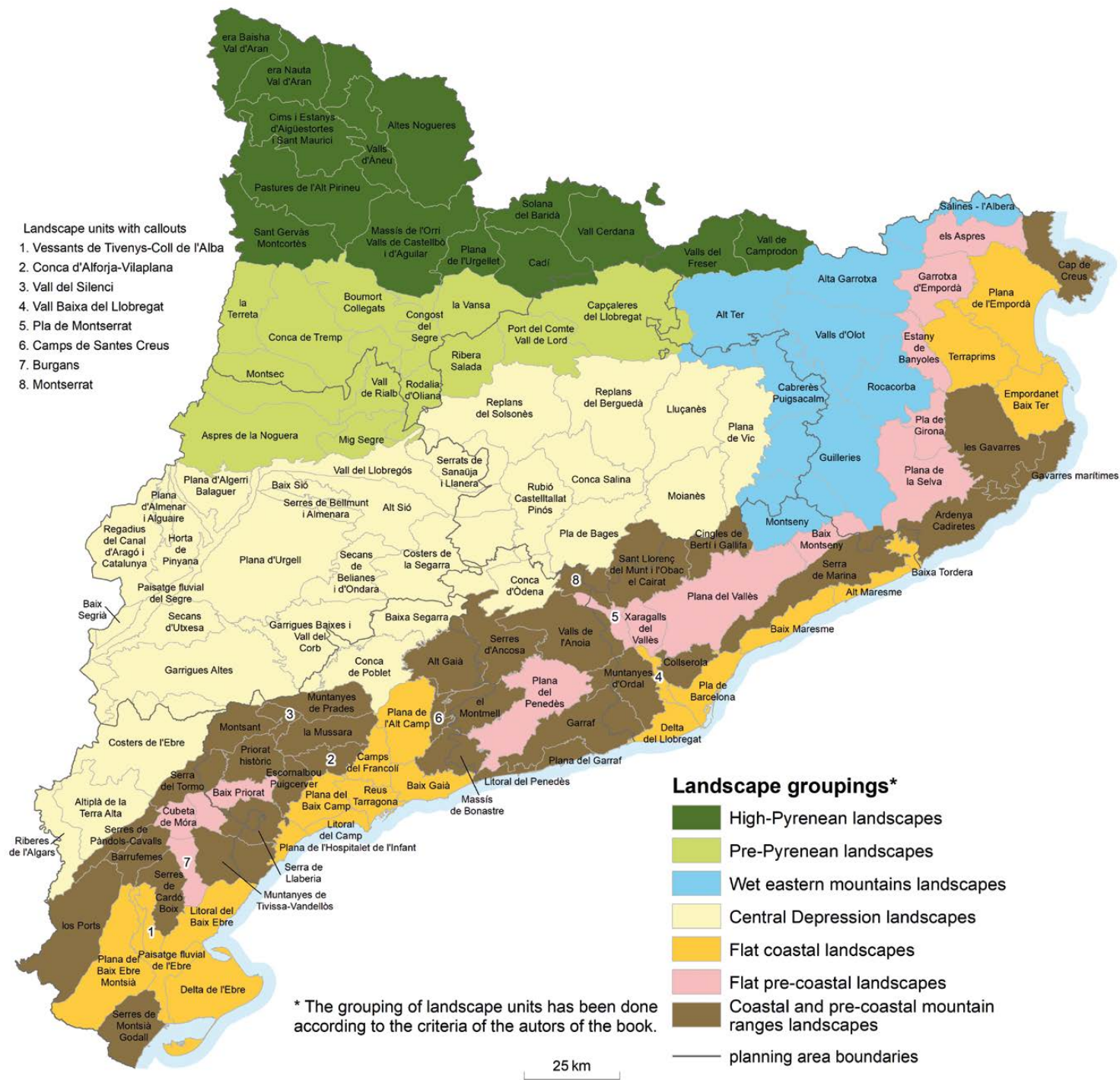
- 1 Sant Llorenç del Munt i l'Obac
- 2 Montserrat Mountain
- 3 Garrotxa Volcanic Zone



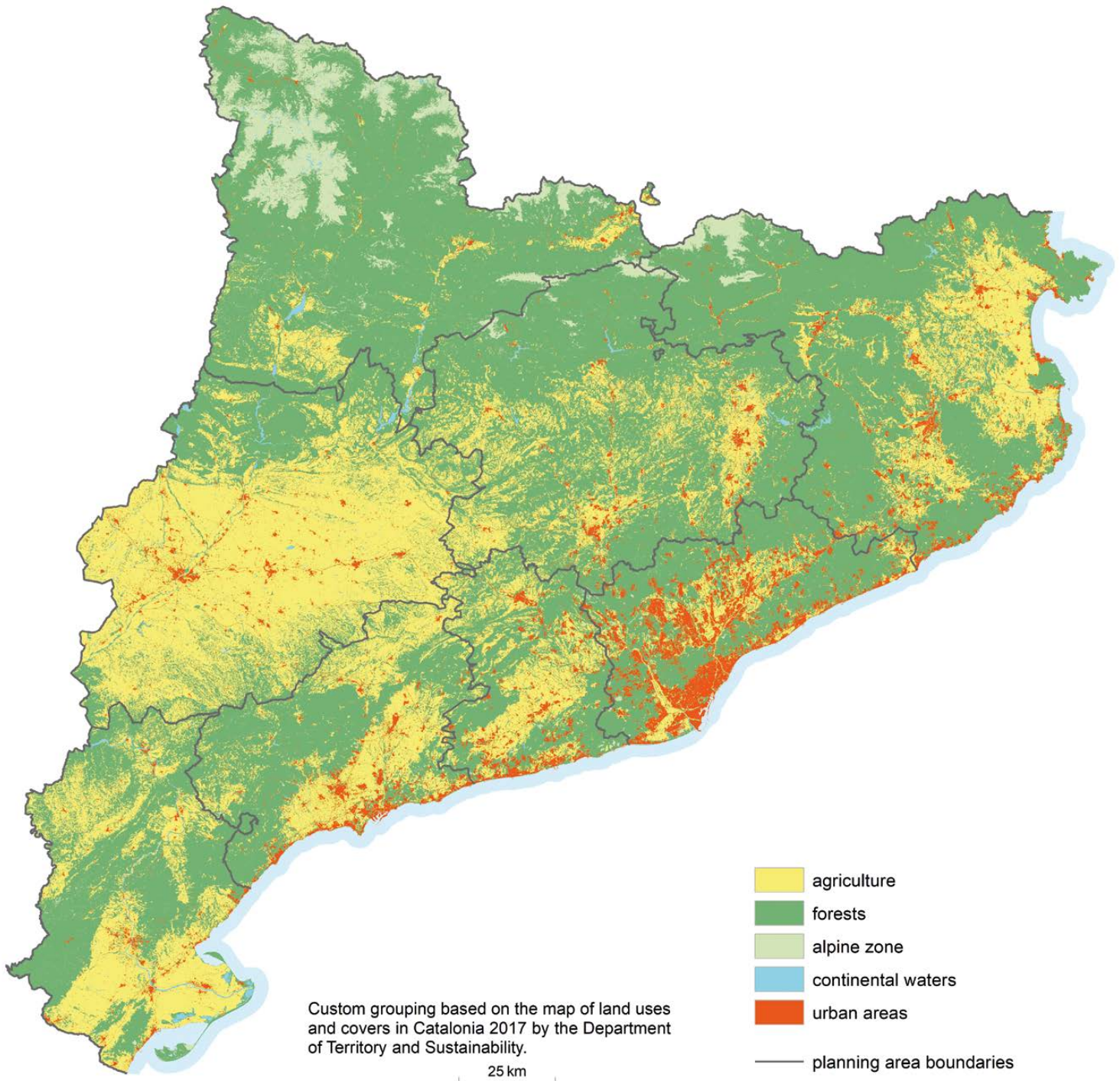
## Other Natura 2000 sites

- |   |   |
|---|---|
|  | Sea sites (Generalitat)   |
|  | Sea sites (Spanish Ministry)                                    |
|  | Land sites  |
|  | Other sites also included in the Catalan Natural Landmarks Plan |

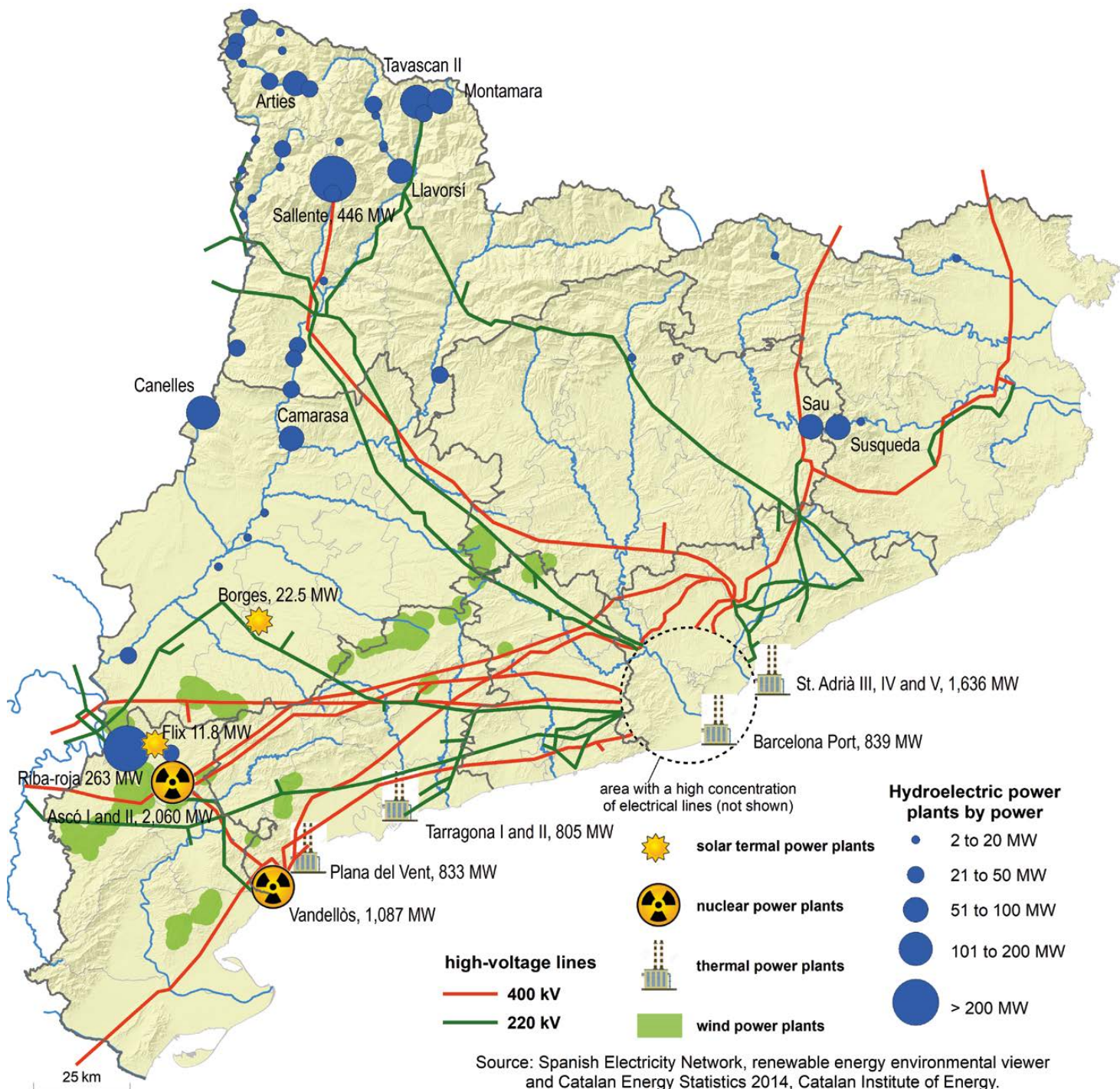
# 15 LANDSCAPE UNITS



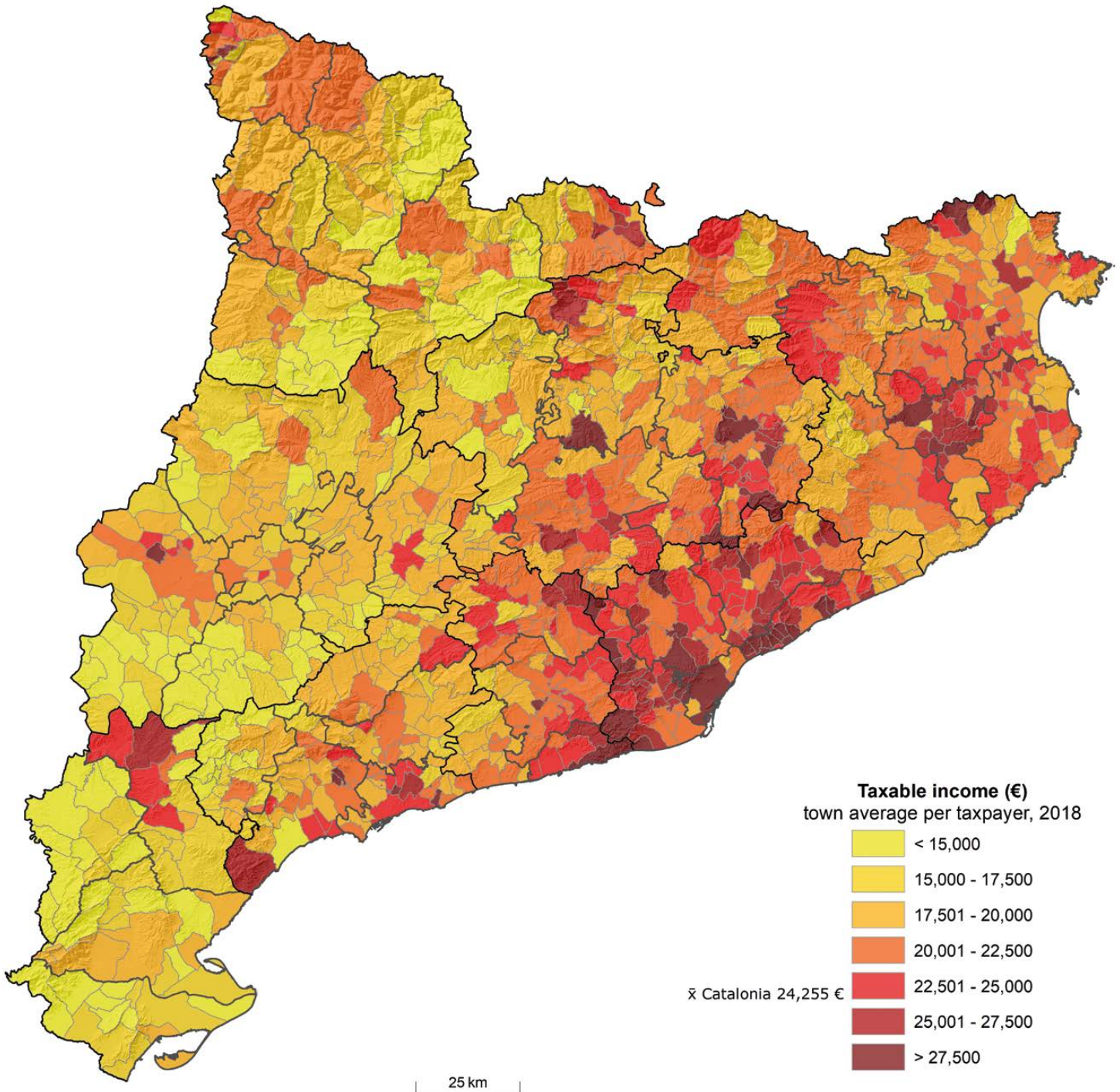




# 17 ENERGY PRODUCTION AND TRANSPORT



# 18 INCOME LEVEL OF TAXPAYERS: INCOME TAX



# 19 INDEPENDENCE MOVEMENT

